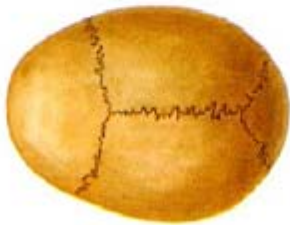


# Allgemeine Gelenklehre

Dr. Miklós Réthelyi

# Synarthrosen

Syndesmose



Synchondrose



Synostose



# Diarthrosen

Articulationes = Gelenke

Articulatio simplex

Articulatio composita

# Gelenke

Gelenkfläche (Facies articularis)  
- Gelenkknorpel

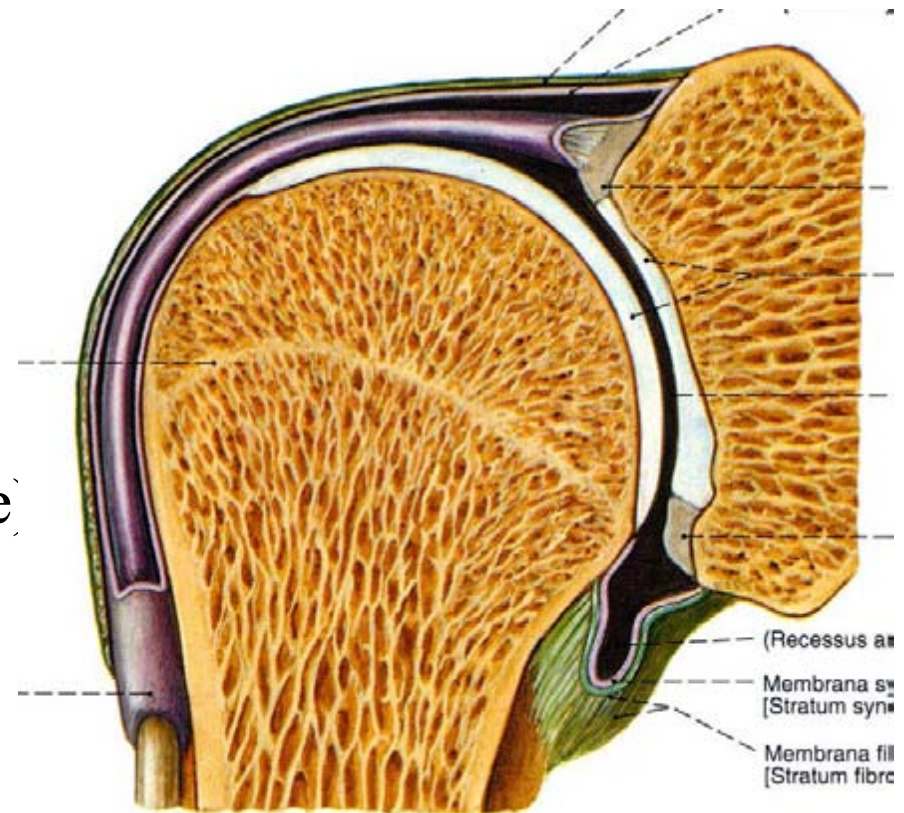
Gelenkkapsel (Capsula articularis)

Stratum fibrosum

Stratum synoviale

Gelenkhöhle – (Cavum articulare)

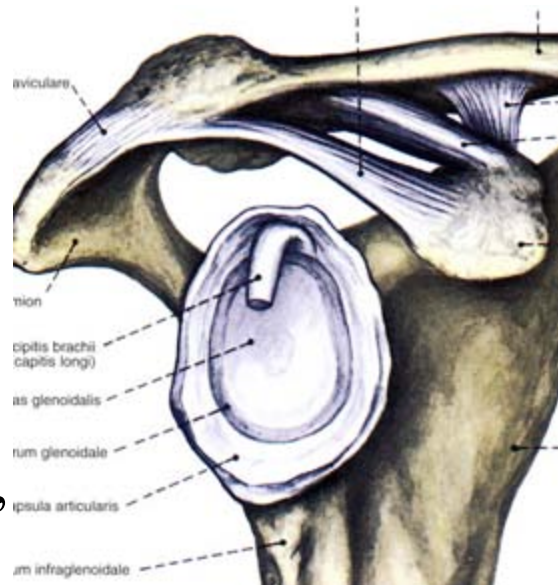
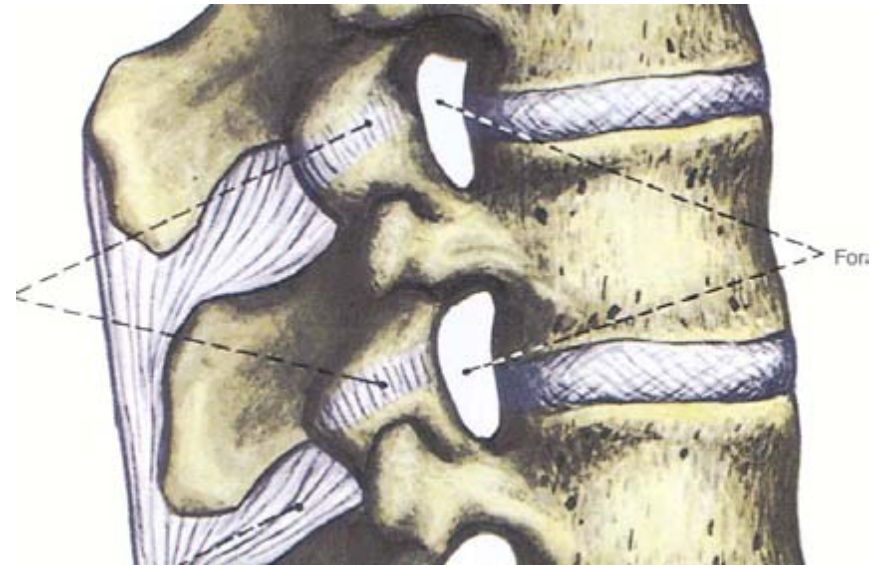
Gelenkbänder –  
(Ligamenta articularia)



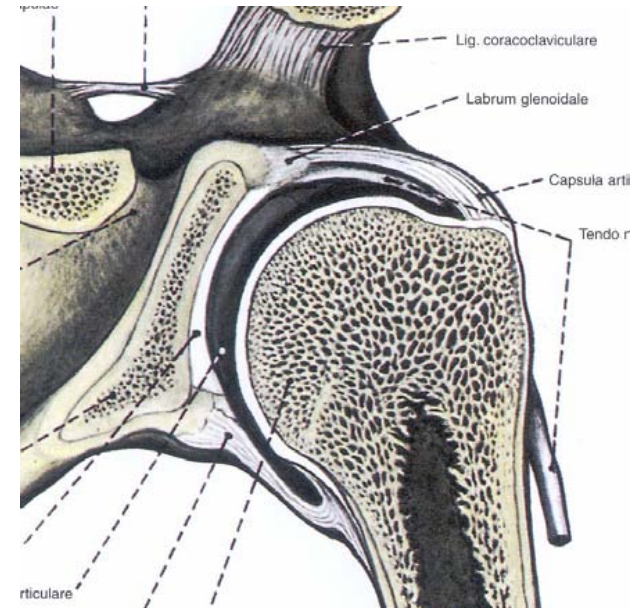
# Hilfseinrichtungen

Zwischenscheiben –  
(Disci, menisci articulares)

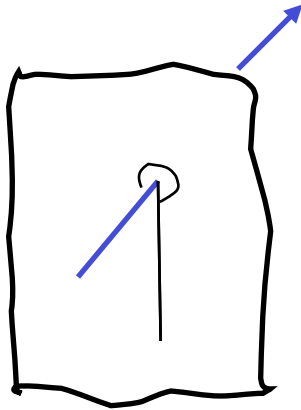
Pfannenlippen –  
(Labra glenoidale)



Gefäßversorgung,  
Innervation

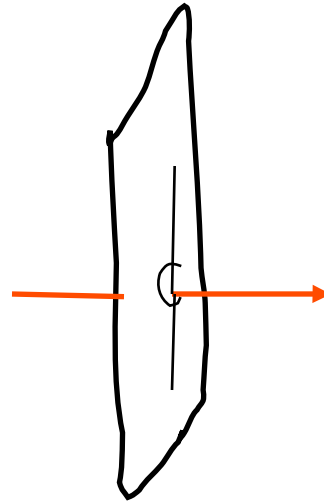


# Bewegungen



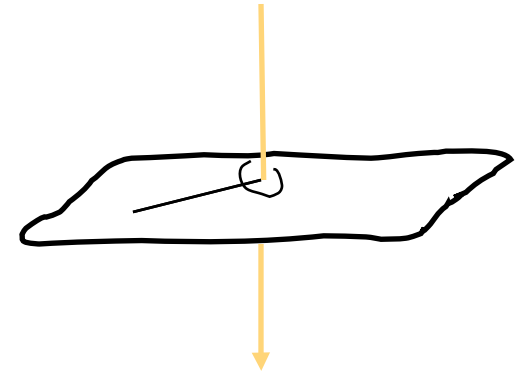
Frontale Ebene,  
sagittale Achse

**Abduktion,  
Adduktion**



Sagittale Ebene,  
transversale Achse

**Flexion,  
Extension**

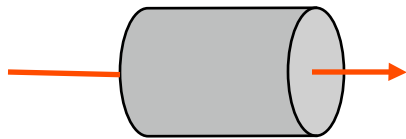


Horizontale Ebene,  
verticale Achse

**Innenrotation,  
Außenrotation**

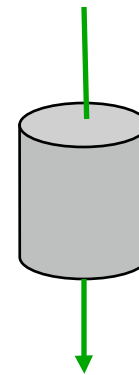
# Einachsige Gelenke

Scharniergelenk –  
Ginglymus

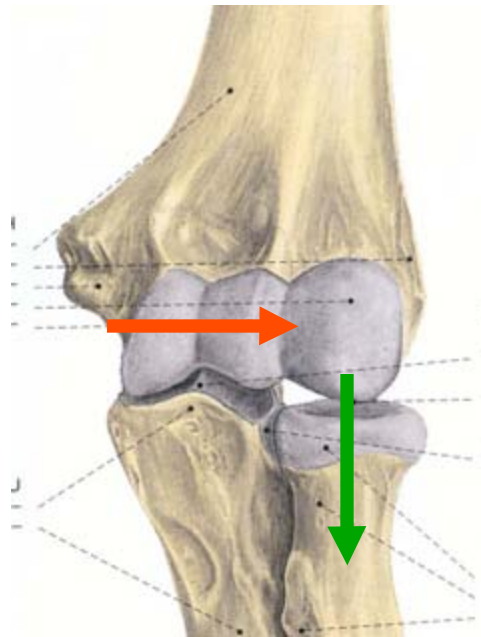


**Flexion, Extension**

Radgelenk –  
Art. trochoidea

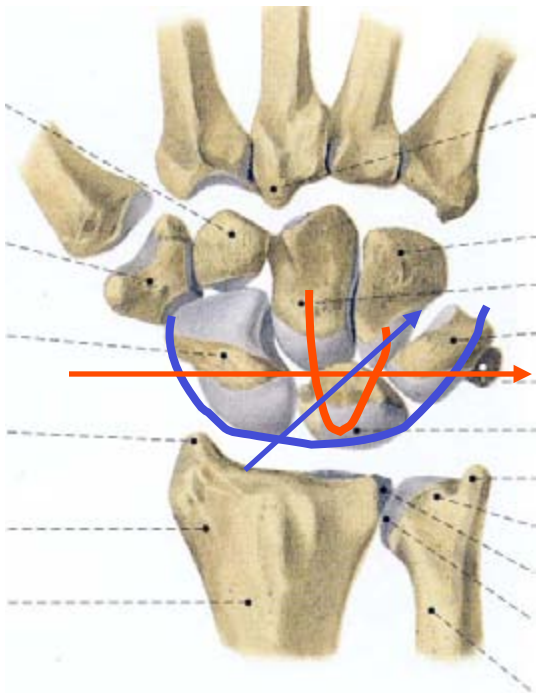


**Rotation**



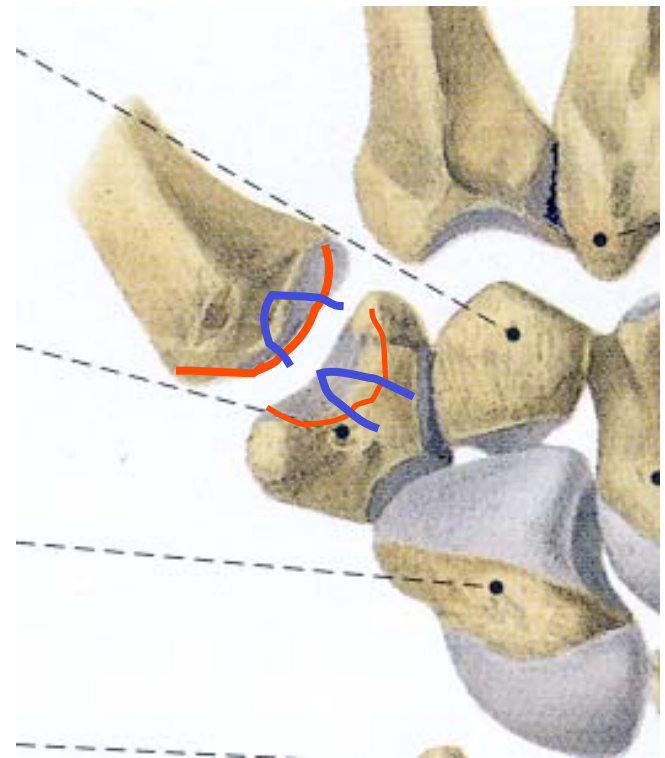
## Zweiachsige Gelenke

Eigelenk –  
Art. ellipsoidea



**Flexion, Extension,  
Abduktion, Adduktion**

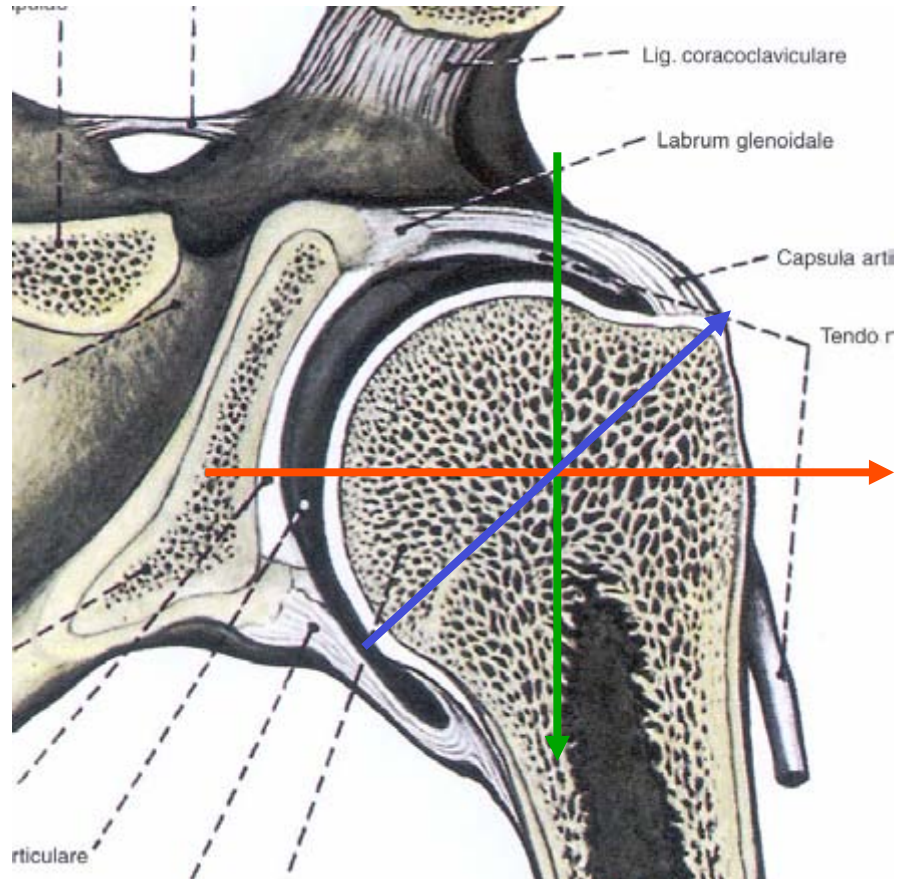
Sattelgelenk –  
Art. sellaris



# Dreiaxsiges Gelenk

Kugelgelenk –  
Art. spheroidea

Nußgelenk



**Flexion, Extension,**  
**Abduktion, Adduktion,**  
**Rotation**

Zirkumduktion



# Allgemeine Muskellehre

spindelförmige

mehrköpfige

mehrbäuchige

platte

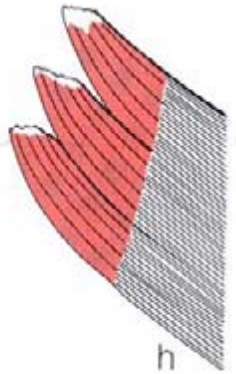
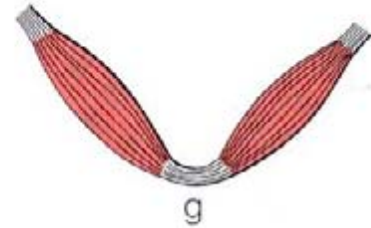
Ursprung

ringförmige

**Muskeln**

Muskelbauch

Sehne



Ansatz

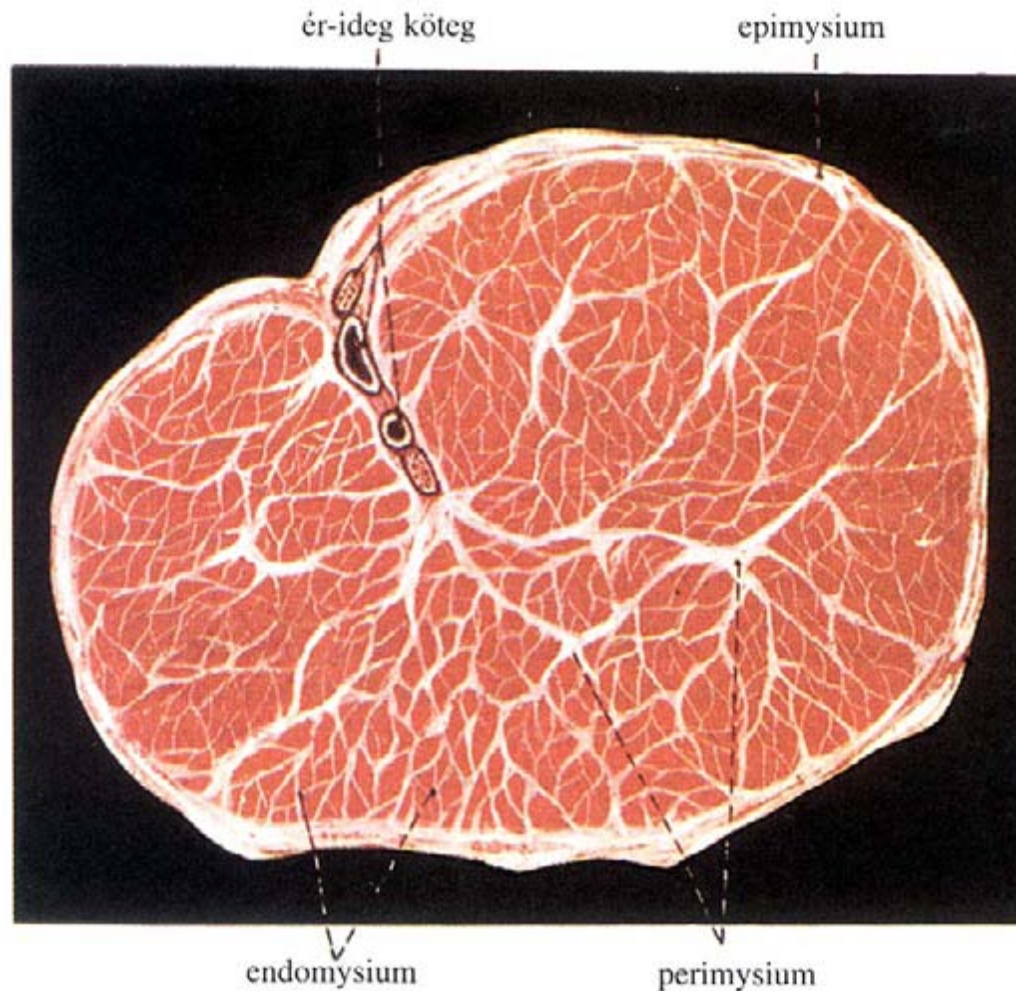
doppelt gefiederte

einfach gefiederte

Aponeurose

# Bindegewebe Hüllen um die Muskelfasern

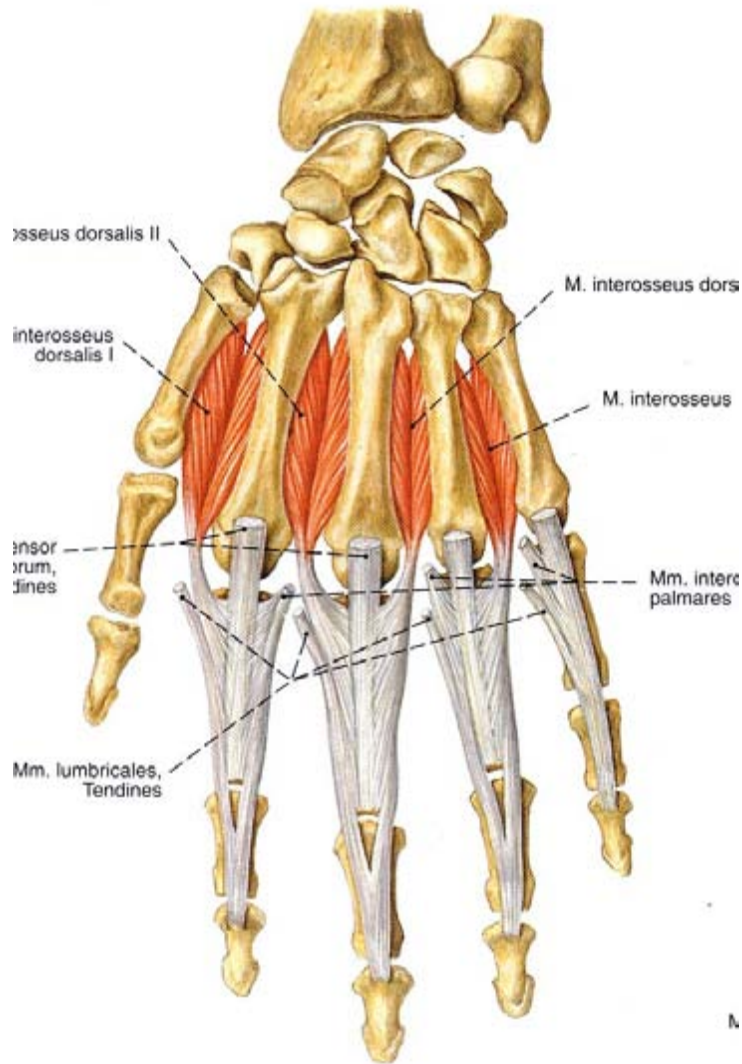
Epimysium



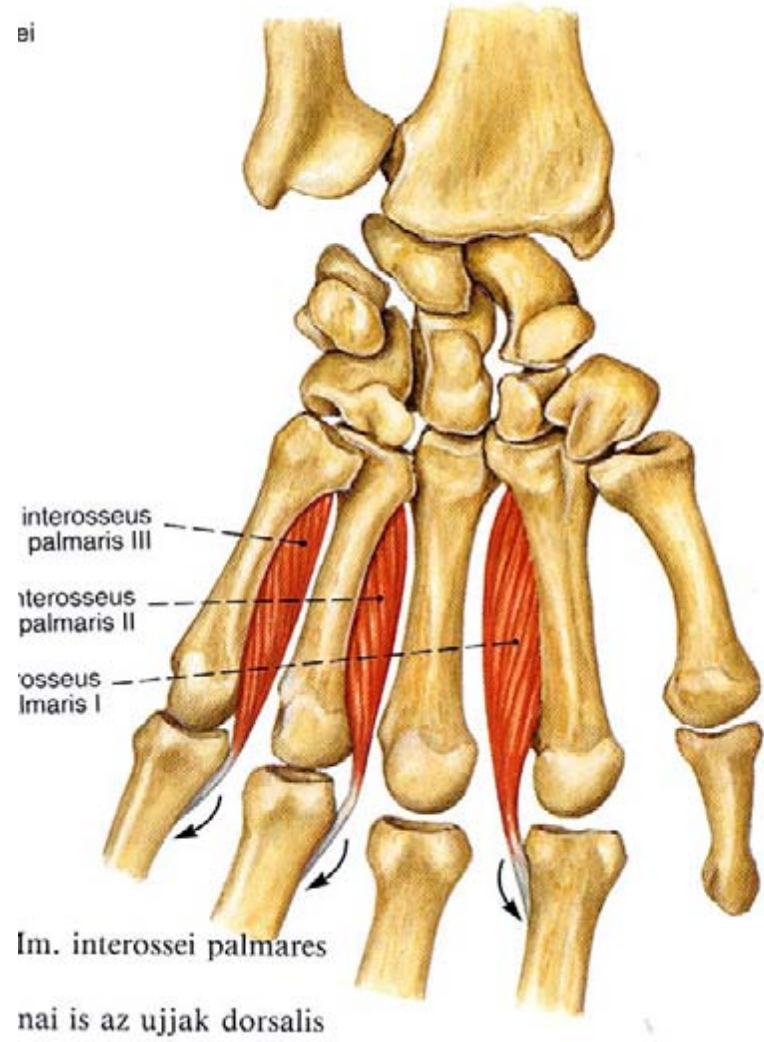
Edomysium (Blutkapillaren)

Perimysium

# Sehnen



Bi



## **Faszien ...**

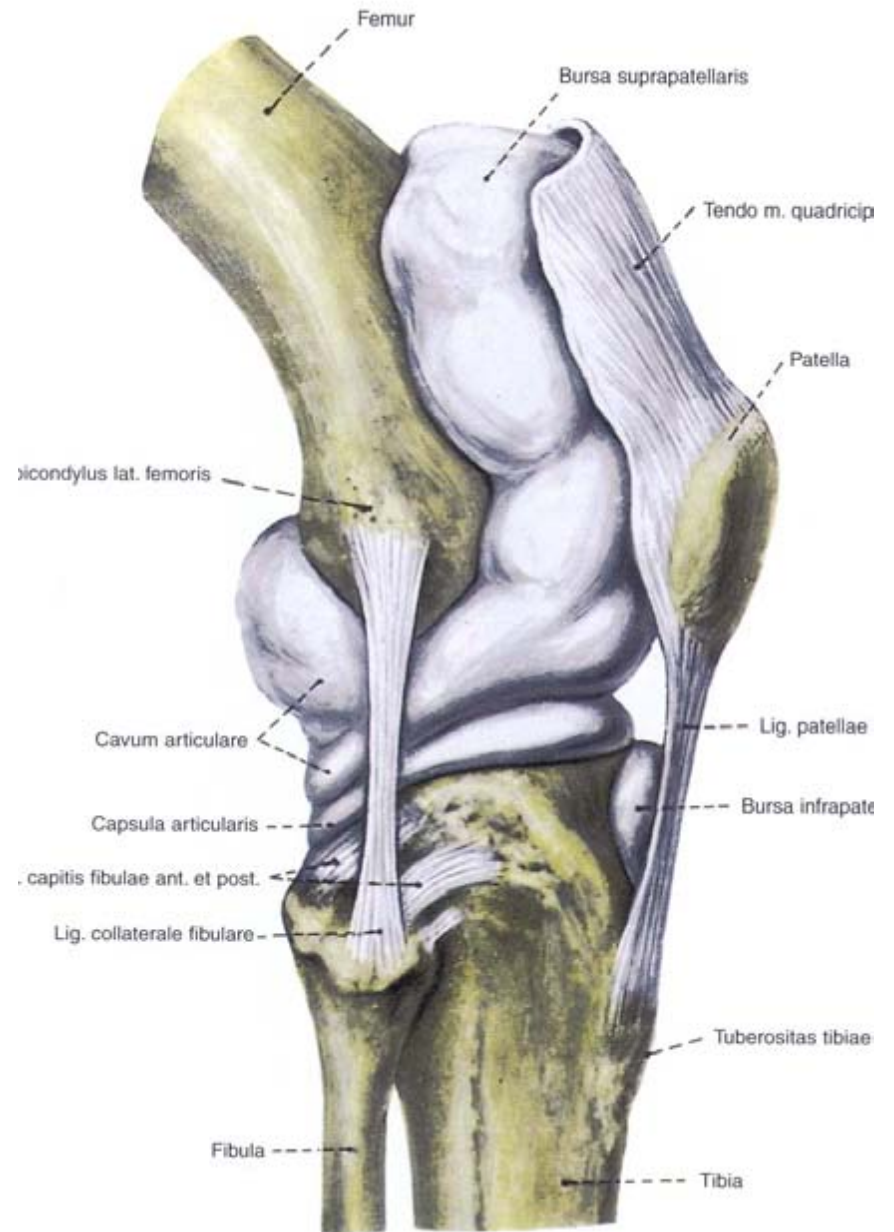
umschließen einzelne Muskeln oder Muskelgruppen;

bilden Ursprungs-oder Ansatzfelder;

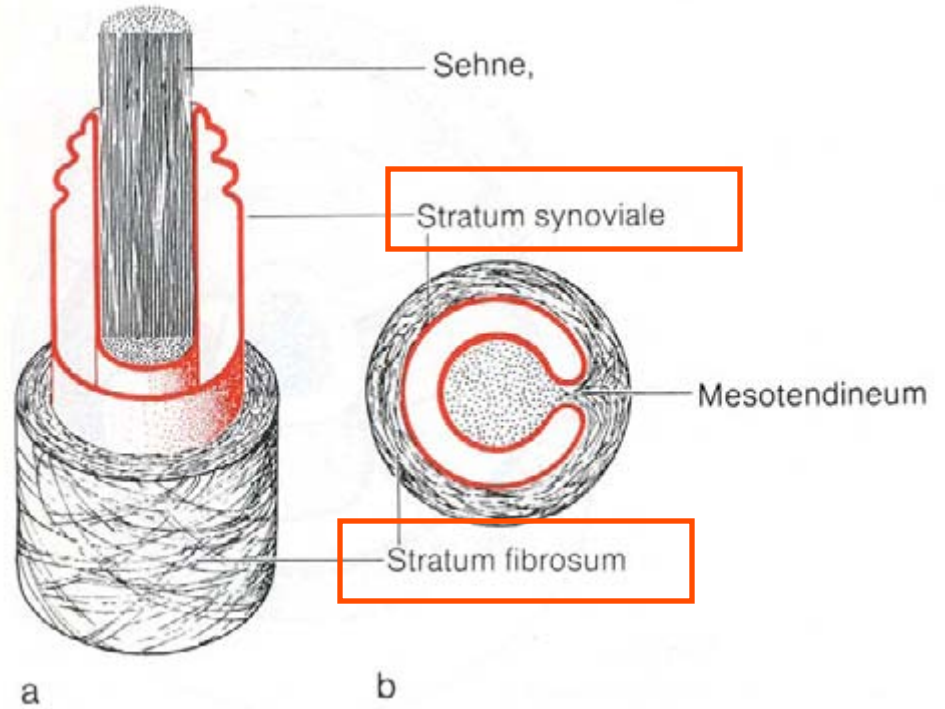
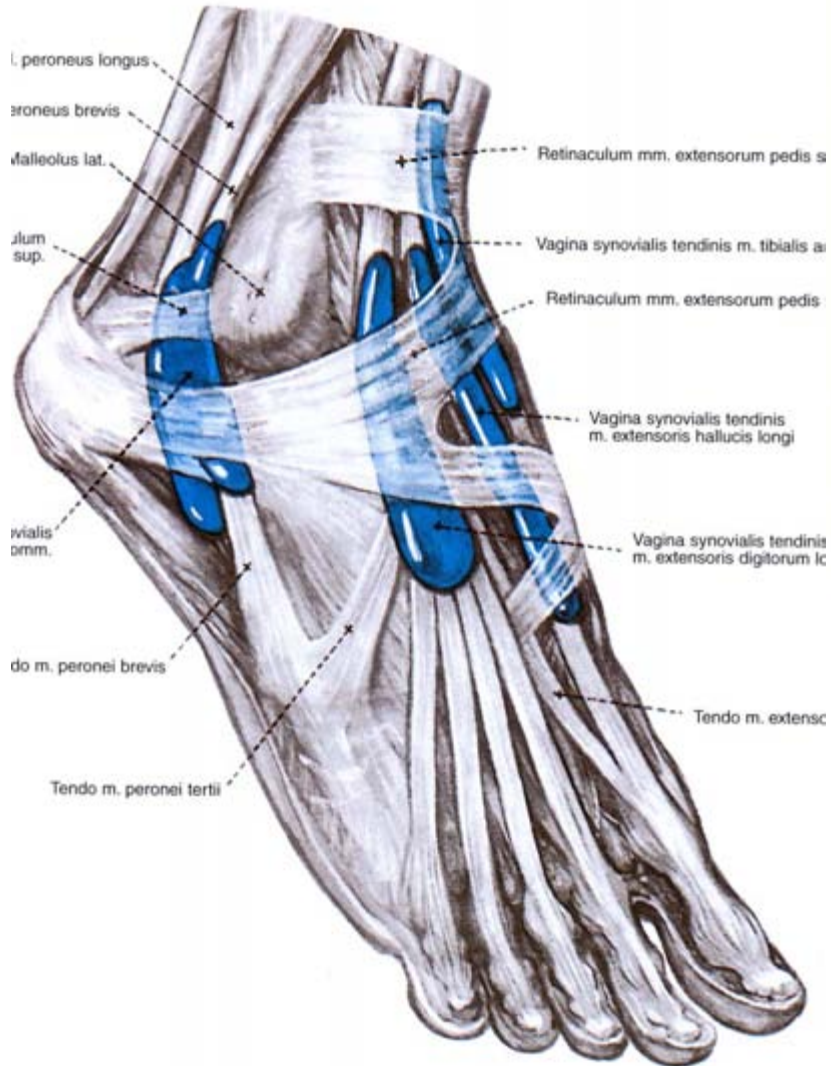
trennen Muskelgruppen voneinander, bilden Muskellogen;

schlauchartig umhüllen längere Muskeln mit schraubenförmigem Verlauf

# Schleimbeutel – Bursae synoviales



# Sehnenscheiden – Vaginae synoviales



# Muskelmechanik

X, Y, Z: Länge der Muskelfasern

